

Speed Enforcement Evaluator

Location

Myrtle Avenue

Total Percentage of Enforceable Violations

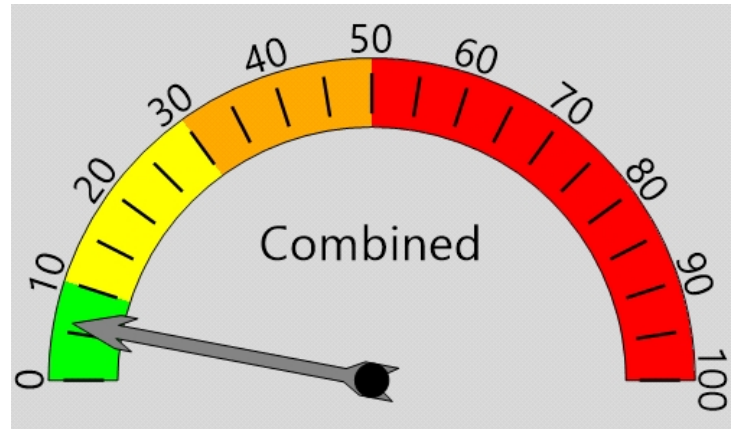
Closest Cross Street

West End Avenue

Posted Speed Limit 25 MPH
Enforcement Tolerance 10 MPH
Enforcement Limit Greater than 35 MPH

Analysis Dates

Start: 1/2/2023
End: 1/9/2023



Percent Speeding: 6%

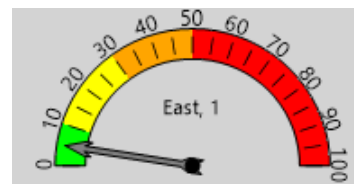
Rating: Low

Equipment Used

Radar Recorder

Installed By

P.O. Marcus Steinhauser



Percent Speeding: 5%

Rating: Low



Percent Speeding: 8%

Rating: Low

ADT

Not Calculated

Vehicle Totals - Combined

<= 15	<= 20	<= 25	<= 30	<= 35	<= 40	<= 45	<= 50	<= 55	<= 60	<= 65	<= 70	> 70
253	565	3914	7834	4103	959	158	22	4	1	2	0	0
85th Percentile: 32.9												

Vehicle Totals - East, 1

<= 15	<= 20	<= 25	<= 30	<= 35	<= 40	<= 45	<= 50	<= 55	<= 60	<= 65	<= 70	> 70
121	375	2457	4099	1823	404	74	10	3	1	0	0	0
85th Percentile: 31.9												

Vehicle Totals - West, 2

<= 15	<= 20	<= 25	<= 30	<= 35	<= 40	<= 45	<= 50	<= 55	<= 60	<= 65	<= 70	> 70
132	190	1457	3735	2280	555	84	12	1	0	2	0	0
85th Percentile: 33.9												